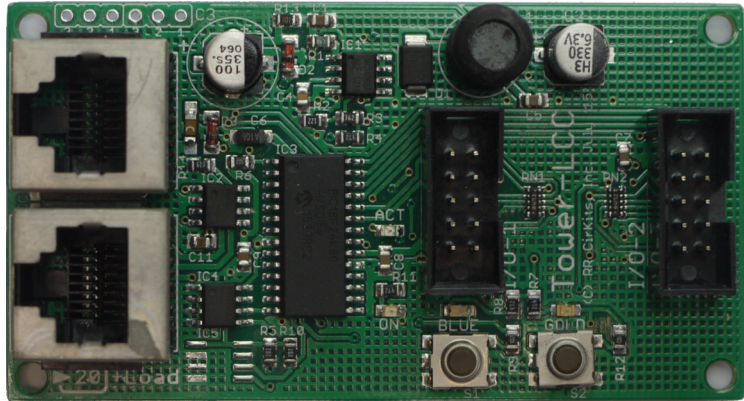
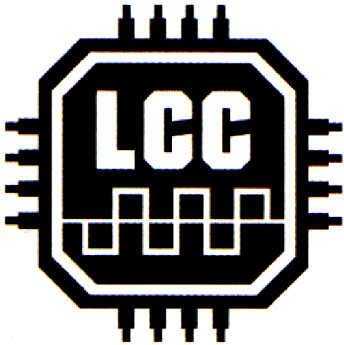


# ***RR-CirKits, Inc.***

*Affordable Electronics for Model Railroads*

## **Tower-LCC**

### **General Purpose 16 line I/O Node**



#### **Tower-LCC Features:**

- NMRA CAN bus LCC<sup>®</sup> 16 Line Logic Level Interface.
- Each line may be used as an Input and/or an Output. (up to 6 EventIDs per line)
- Powered directly from LCC<sup>®</sup> bus connections\*.  
\*Note: Requires a powered LCC bus. [20 ma. bus load] (plus I/O module current)
- On board Switching Regulator provides 5V power for external interface modules.
- Includes Internal Logic Elements. Also compatible with JMRI.
- Dual RJ45 connectors for easy LCC<sup>®</sup> loop through connections.
- Dual 10 Pin I/O connectors. (+5V, Gnd, and 8 data lines per connector)
- 4 LEDs display status. (Power, Activity, Blue, and Gold)
- Small package size. Just 1-<sup>3</sup>/<sub>4</sub>" x 3-<sup>1</sup>/<sub>4</sub>" x 5/<sub>8</sub>".
- Ready to run unit. – Nothing extra to purchase.
- Standard 125,000 Baud CAN bus LCC interface speed. – No jumpers or switches to set.
- Boot Loader for user installable firmware upgrades. (JMRI 4.6 or later)
- State Check. NVRAM to Remember States of I/O lines and Logic through power cycles.

Suggested Retail Price: \$69.95

LCC<sup>®</sup> is a trademark of the NMRA

RR-CirKits, Inc.  
7918 Royal Ct.  
Waxhaw, NC USA 28173  
<http://www.rr-cirkits.com>  
[sales@rr-cirkits.com](mailto:sales@rr-cirkits.com)  
704-843-3769  
Fax: 704-243-4310

RR-CirKits, Inc. products are designed and built in Waxhaw, North Carolina

January 2017